

BOSCASTLE CHRONICLE

FEBRUARY ISSUE 1986

10p

WELCOME VILLAGE NEWS! BOSCASTLE BANK-LESS

DEAR READERS

Hello and welcome to your first village newsheet. Our aim and objective is to promote news and views and events of the village of Boscastle, interspersed with a little light humour, coupled with a few facts and information beneficial to the residents of the village.

THE UNTIMELY CLOSURE

OUR first month's publication centres mainly on the proposed closure of the National Westminster Bank (Boscastle Branch). Having just recovered from the closure of the sub-branch of Barclays Bank and the inconvenience caused to many account holders, we now find ourselves facing the closure of the only remaining bank in Boscastle, leaving the village without banking facilities and causing once again wholesale inconveniences to existing customers and no doubt to the influx of summer visitors.

BANK ATTITUDE

NOT that the bank seem to care, and I quote from a letter from the sub-manager of the Camelford Branch which advises:

'However there are a number of practical steps you can take to cover the problems. When you wish to pay into your account I am sure there must be someone - your employer for instance - who does come into Camelford regularly, and who would be prepared to drop in a sealed envelope containing your credits to your own account. In other commu-



ities where there is no bank, local shops will often fulfil this function (i.e. Cheque encashment). Whilst I appreciate you will need to make some adjustments to your established patterns, I am sure that once the adjustment has been made, you will not find the new arrangement any less convenient'.

Incidentally, the words in brackets are our words.

No answer at all really is it?

LOCAL BUSINESSES MIGHT HELP

We only hope the respective businesses in the village who already kindly encash cheques will accept the bank's surmise. Perhaps these businesses will undertake standing order facilities and credit card facilities along with the other services they already provide; perhaps our village stores will be well stocked with bagged coinage as well!

ACTION BANK PUTS THE BOOT IN

Does Boscastle realize the effect upon it of National Westminster Bank P.L.C.'s decision to close its local branch? Now we will have no banking facilities here at all. Barclays started the rot by closing their local office last year, but we still had Nat West, the self-styled 'Action Bank' to rely on, but now through high level uncaring moves by the Directors of our only bank we are left out in the cold.

I write as a local businessman who will find it merely inconvenient myself now to travel to Camelford during the tourist season to obtain change and bank cheques that pass through my shop, but I also speak up largely for those many villagers, who because of the lack of public transport, find it difficult or even impossible to get to Camelford. Depriving Boscastle of its last bank is an act of gross irresponsibility and lack of concern on behalf of a major national company, which is supposed to care for its customers, to the welfare and feelings of an entire community.

Having no bank here will stifle the growth of any new businesses which might wish to set up in our village, and have a crippling effect on the opportunity of creating further employment here. Existing businesses here are going to be further frustrated, firstly by the recession which has hit Cornwall in particular, and now even more devastatingly in that the tourists that do manage to visit us will be totally unable to cash cheques and credit cards to enable them to spend their money on the many and varied attractions that Boscastle is renowned for offering them, be it our hotels, guest houses, shops,

We hope you find this newsheet of interest and we would welcome your stories and points of view. See you in March.

M. Q.

WRITE TO

MICK QUINTON 3 HILLDENE HIGH ST. BOSCASTLE TEL BOSCASTLE 559

pubs and the other many seasonal occupations which employ so many of our own villagers

ROGER THE POTTER

If you wish to make your views known on this subject, PLEASE write to the Directors, National Westminster Bank P.L.C., 41, Lothbury, London. E.C.2P 2BP.

COMMENTS

Our first letter of comment on the matter comes from Mr. Roger I. Little of Camelot Pottery - perhaps there will be more but hopefully before the bank ceases to trade.

One final point - if there is anyone without a bank account who wishes to open one, may we suggest they do so at the Boscastle Branch of NatWest..... who knows, it might prevent closure.

FINAL COMMENT

With the proposed closure of the NAT WEST (Boscastle Branch), perhaps the time is prevalent to find out more about the Post Office Giro Bank system, which is being demonstrated at the Boscastle Post Office.

There, in a video facility, you can be informed of:-

1. THE MONEY STORY
2. THE BANK IN YOUR HOME
3. THE BANK THAT'S DIFFERENT
4. THE MAKING OF A COMMERCIAL

North Cornwall Hunt will meet at the Wellington Hotel at 11.00 a.m. on Wednesday, 12th March.

EMMET UTTERINGS

Emmet, half way up Old Road on meeting a local inhabitant:

"Excuse me, my man, is the Harbour at the top of this hill?"

Local inhabitant: "No gaffer..... only at high tide!"

☆☆

Emmet down at Harbour to local fisherman: "I say there, how far is the horizon?"

Local lad: "Depends 'ow tall yer be".

★★★★

GUESS WHO...

...after writing to only one or two of his customers that he was closing their only bank and inviting comments from his shocked clients, then proceeded to take a holiday and thus avoid the furore????

★★★★

ODD FACTS

A Tipperary man received an electricity bill from the electricity board for £5743.29, and with it a prosecution. He had wound his electricity meter forward!

☆☆

The Cunard Liner QE2 left Madeira minus two crew members who nipped ashore to buy a parrot. Hailing a local taxi and not being conversant with the local language, they indicated to the driver what they wanted to buy by flapping their arms up and down....the taxi driver responded to this by promptly driving them to the airport.

MORE PLEASE

BOSCASTLE STORES

ALL YOUR GROCERY REQUIREMENTS

FREE DELIVERY THURSDAY


MICK & JOSIE YOUNG

BOSCASTLE 340

SPAR



POST OFFICE & GENERAL STORES




DUNN STREET, BOSCASTLE


Groceries
Fruit &
Vegetables
Cigarettes
Confectionary
Stationery

CLIMBING ADVENTURE CENTRE

No previous experience necessary.
Basic climbing through to lead.
Climbing. Modern Rope Techniques
Abseiling.
All courses to Local Education Authority Standards.
All year round courses.
Weekly or W/End Residential,
Self-catering or with full board.
Individual or group bookings.
SAE for brochure:
South West Adventure
Ron Hart
Dunn Street, Boscastle
Cornwall PL35 0AA.
Tel. Boscastle 222

SOUTH WEST ADVENTURE





J. ADAMS

BOSCASTLE

Family Butcher

TEL BOSCASTLE 245

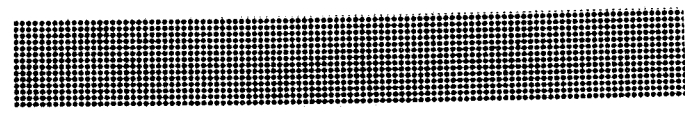
Telephone BOSCASTLE 298

BOTTREAUX GARAGE

(Proprietor: F. BRIDGE)

BOSCASTLE : CORNWALL

FIRST-CLASS CELLULOSING BODY REPAIRS
ENGINE OVERHAULS, REBORES ELECTRICAL REPAIRS PETROL O



BREWERY VIS

On the evening of Wednesday, 29th January, St. Austell Brewery played host to the regulars of the Cobweb Inn for a much acclaimed brewery visit.

The brewery sales representative, Mark Shackleton, conducted an interested party around the brewery to view the beer-making process and equipment, before retiring to the small brewery bar to sample the excellent ales, ably run by the young barman Glen Bellamy. He was assisted by Jack-of-all-trades, the redoubtable Mark Shackleton, drinkers and assistants presided over by Sales Manager Bill Bellamy.

After delicious pasties made and supplied by Stan Greenaway, sadly it was time to wend our weary way home. We all look forward to the next visit. Our special thanks to our coach driver for getting us back to Boscastle safely, considering the atrocious weather and road conditions.

★★★★★★

HISTORY OF

For more than a lifetime quality ales have been brewed at St. Austell Brewery situated in mid Cornwall.

The original brewery was sited in the town close by the Market House and the parish church of Holy Trinity, but in 1893 the brew house was moved to its present unique position high on the hill overlooking the town and St. Austell Bay. The business in those early days was carried on under the founder's name of Walter Hicks, a man whose family had owned and farmed Menadhu, Luxulyan, since the sixteenth century, but in 1934, the name of the Company was changed to The St. Austell Brewery Co. Ltd. This remains a private company, the President of which is Mr. E. C. Barnes, a grandson of the founder whilst the other directors remain linked by family ties.

The name of Walter Hicks is retained by the Wine & Spirit interest of the Company, but in addition to the stocking and maturing of the most comprehensive variety of wines and spirits, the main activities remain the brewing, bottling and racking of St. Austell beers and the manufacture of mineral waters. Added to this a large number of ciders and

GUNNEDAH, CRACKINGTON HAVEN, BUDE.

Tel. St. Gennys (08403) 265

Superior self-contained bungalows and cottages with balcony and/or patio. All electric. Two to four bedrooms. Comfortable lounge with colour T.V. and dining area. Fully equipped kitchen. Bathroom with shower. One with shower unit only. All bed linen provided.

Garage/parking on the premises. Launderette. Pets by prior arrangement. All units but one overlook the sea with sandy beach only 200 yards away. Individual entrances. Wonderful views and scenery.

Suitable for occupation all year round. Send for brochure and terms to resident proprietors Carol and Alan Grauers.

A.A. Listed. English Tourist Board Registered.

BOSCASTLE POTTERY

Come and watch the trees grow on our pots! We make this unique Magic Mochaware, a form of pottery decorated with a Herb which creates a tree and fern effect as if by magic.

Open Every Day.

ROGER IRVING LITTLE & SONS, CAMELOT POTTERY. Telephone Boscastle 291.

Ring Boscastle 278

'Cobweb Inn'

BOSCASTLE

FREE HOUSE

CHILDREN'S ROOM

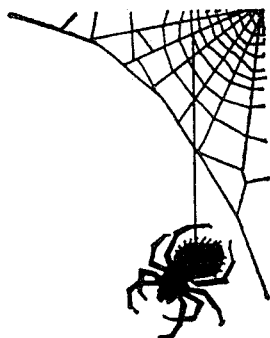
SNACKS IN THE BAR

RESTAURANT UPSTAIRS

REAL ALES

Your Hosts :

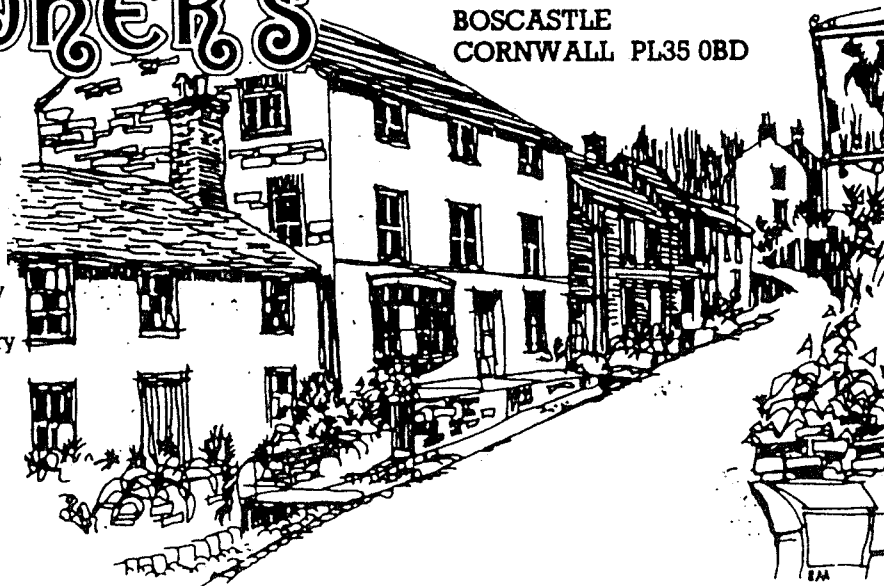
Ivor, Vera & Adrian



ST. CHRISTOPHER'S

COUNTRY HOUSE
BOSCASTLE
CORNWALL PL35 0BD

ST. CHRISTOPHERS, a 200-year-old Georgian House once formed part of the Manor of Boscastle and in the days when the harbour was a thriving port, became the village store. Now tastefully converted it retains much of its original character and it is hard to imagine the rooms having once been the scene of afternoon teas and ladies trying on hats. Situated at the top of the village of Boscastle and overlooking the valley below we are surrounded by a delightfully unspoilt village atmosphere with the 16th Century Napoleon Inn a stone's throw away.



Although St. Christopher's was built long before the motor car was invented, we do have a car park a short distance away.

THE BREWERY

Other brewers' beers are stocked to satisfy the requirements of the free trade.

The brewery in modern terms is relatively small and is equipped with plant that has changed very little in design over many years, although improvements are constantly made, primarily in the use of improved modern materials when replacement is needed.

These traditional qualities which play such an important part in the brewing of the beer are also to be seen in the staff, many of whom have worked for the Company for their entire working lives with several families represented by more than one generation.

Some landlords too have served for many years in the 130 public houses now run by the Company, and so it remains a truly family concern. We believe this tradition and this relationship is reflected in the quality of our beers for no effort is spared in constantly maintaining the standards of traditional brewing that have, in fact, grown with us.

Take care of our beer - drink it!



Botreaux House Hotel and Licensed Restaurant

BOSCASTLE, CORNWALL PL35 0BG
Telephone Boscastle 231

Resident Proprietors: Clive & Anna Darvill

** AA Ashley Courtenay Recommended *R

THE WELLINGTON HOTEL

FULLY LICENSED FREE HOUSE
TEL BOSCASTLE 203



HOT OR COLD BUFFET IN THE LOUNGE B...

(EGON RONAY RECOMMENDE

DOCTOR'S DIARY

DRS. JARVIS, GARROD & BROOKE

BOTTREAUX SURGERY TIMETABLE

Telephone: Boscastle 209

MONDAY: 9.15 - 10.30 Dr. Garrod
 4.30 - 6.00 Dr. Jarvis (+)
 TUESDAY: 9.15 - 10.30 Dr. Garrod
 WEDNESDAY: 9.15 - 10.30 Dr. Jarvis
 4.45 - 6.00 Dr. Jarvis (+)
 THURSDAY: 9.15 - 10.30 Dr. Jarvis
 FRIDAY: 9.15 - 10.30 Dr. Garrod
 4.45 - 6.00 Dr. Garrod (+)
 SATURDAY: 9.30 - 10.30 BOSCASTLE
 For EMERGENCIES ONLY

(+) - By appointment only

BRANCH SURGERIES:

TUESDAY: 4.30 p.m. Crackington Manor
 Hotel, Crackington
 Haven.
JARVIS

FRIDAY: 4.30 p.m. Wainhouse Corner

DR. GARROD

NO ROUTINE SURGERIES ON SUNDAYS OR
 BANK HOLIDAYS

REQUESTS FOR HOME VISITS - If poss-
 ible, please bring the patient to a
 surgery. When necessary, please notify
 the surgery between 9am and 10am
 giving your telephone number and as
 much information as possible.

DISPENSING - At Boscastle, Monday to
 Friday 9am to 1pm. Repeat prescriptions
 should be telephoned to the surgery at
 least 24 hours before they are required
 and requests made before 11.30am.
 Emergency dispensing only on Saturday
 mornings.

IN AN EMERGENCY - Telephone Boscastle
 209 or Camelford 770214. Answering
 machines on these numbers will direct
 you to the Doctor on Call at nights
 and at weekends.

PATIENTS are advised to attend the surg-
 ery at which their records are kept.
 EVENING SURGERIES are intended for
 those who are working and thus are
 unable to attend morning surgery.

FORTHCOMING EVENTS



Thursday 20th February
 CHURCH HALL - 2.00 p.m.
New, Nearly New and New To You Bargains
 BOSCASTLE FOOTBALL SUPPORTERS CLUB

GET WELL WISHES

Best Wishes for a Speedy Recovery
 go to Malcolm Biddick, who broke his
 leg during a Boscastle v. Lanivet match
 on Saturday 1st February!

☆☆

A special Get Well Soon message goes
 to Geoff Tierney after his recent
 operation at Derriford Hospital.

PLEASE LET US HAVE

YOUR MARCH ADVERTS
 AND DATES

NOW

PUB EVENTS

COBWEB LADIES DARTS - Monday evenings

17th February - Bye
 24th February - St. Tudy (H)

COBWEB MENS DARTS - Thursday evenings

A-TEAM

20th February - Cobweb B (H)
 27th February - Wharnccliffe (A)

B-TEAM

20th February - Cobweb A (H)
 27th February - Green Inn (H)

COBWEB POOL

Tuesday - A Team

18th February - White Hart (H)
 25th February - Horseshoe (A)

Tuesday - B Team

18th February - King Arthurs (A)
 25th February - White Hart (H)

COBWEB INN MUSIC N&S

Every Saturday Night - Bar Til 12.00

16th February - Country Rich
 23rd February - Laurie Stevens (Sun.)
 1st March - Ben Murphy

FOLK MUSIC at the Napoleon Inn every
 Wednesday and Friday evening.

Fashionable Boscastle

Now Ladies, this is your column - let us make the most of our assets and not revert to the Country Peasant Look just because the months of gloom, doom and brown envelopes are ruling our lives and our pockets.

I am sure with a little help and re-arrangement of our vast wardrobes we can achieve a look which is both unique, warm and comfortable - in fact:

The Boscastle Look

We must all remember too that Jumble Sales are with us again, time to change, pass along and purchase a reasonably priced new Winter/Spring outfit.

We must all have a pair of trousers, (if not, pinch the old man's - the baggy look is in!). Above the trousers for warmth, two or three tee-shirts - last year's Costa-de-Sol or local pub ones are fine. Top the tee-shirts with the

making of your outfit - The Jumper.

Paris has decreed Big, Baggy and Bright....the Boscastle Look is more adventurous....shrunk, matted and dull. Holes in the sleeve are optional, and for a really fashion conscious note, Rayburn scorch marks are IN!

BIG FASHION NEWS - Around the neck a long, long scarf, the brighter the better, toning gloves and hat and your outfit is almost there.

FOOTWEAR - Well, as we are very aware of the romantic mists and veils of sleet which smother the village during the cold winter months, may I boldly suggest a return of the good old Black Wellie, two sizes too big, embellished with L and R.



COOKING WITH... PAPRIKA

PAPRIKA - A bright red spice made from sweet red peppers that are dried then ground. It has a slight peppery taste but is not hot so it can be used in generous quantities. Paprika is also very rich in Vitamin C.

It is chiefly produced in Hungary and is widely used there and in Central Europe. Several grades of paprika are produced so it is better to buy a well known brand of which the quality is reliable. Paprika is the essential flavouring for Goulash, and can be used in many other stews and casseroles. It can also be used to flavour and colour sauces, soups, vegetable and fish dishes and is especially good with chicken.

Hungarian Goulash is a simple folk dish, nourishing and warming. You do not need anything to go with it except lots of crusty bread to mop up the sauce. You could serve it with a green salad.

HUNGARIAN GOULASH

Serves four people.

- 1-2 tbls oil.
- 2 medium onions, cut in half then thinly sliced.
- 2 cloves of garlic, finely chopped.
- 2 tbls paprika.
- 1½lbs lean beef, cut into 1½ in. cubes.

- 1 pint beef stock.
- ½ tsp caraway seeds.
- salt and freshly ground black pepper
- 2-3 medium sized potatoes, peeled and cut into 1 inch cubes.
- 2 tbls tomato puree.
- 1 large green pepper, chopped.
- ½ tsp marjoram.

METHOD

Heat the oil in a large heavy saucepan. Add the onions and cook slowly until soft and slightly coloured, this will take 5-8 minutes; add the garlic and cook for another minute.

Remove from the heat and stir in the paprika until the onions are well coated. Add the beef and tomato puree and stir well. Next add the caraway seeds, potatoes, stock and salt and pepper, return to the heat and bring to the boil then turn down the heat to a simmer. Cook very slowly for ½ hour with the pan partially covered, then add the peppers and marjoram and continue to cook slowly until the beef is tender and the potatoes are cooked, keeping the pan partially covered - this will allow the sauce to thicken slightly.

Julia

BREAK TIME

U SAID IT

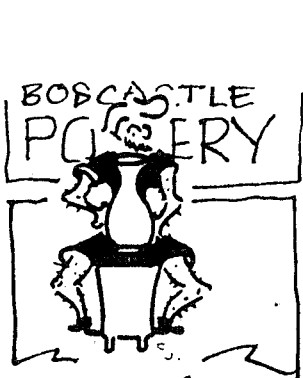
THE FOLLOWING ARE ACTUAL STATEMENTS FOUND ON INSURANCE FORMS WHERE CAR DRIVERS ATTEMPTED TO SUMMARISE THE DETAILS OF AN ACCIDENT IN THE FEWEST POSSIBLE WORDS.

The car was legally parked as it backed into the other vehicle.

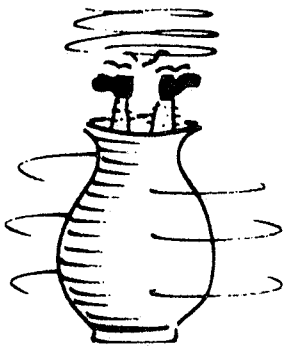
An invisible car came out of nowhere, struck my car and vanished.

In an attempt to kill a fly, I drove into a telephone pole.

I collided with a stationary truck coming up the other way.



A SIGN OF SPRING...



LOCAL POTTER AFTER A LONG LUNCH IN THE COBWEB

FIND THE HIDDEN LOCAL PLACE NAMES

E S I D A R A P Y O R M H L T
 X U A E R T T O B C F C O A E
 D C O L D L L I M H N O T Z S
 S L O W R M N C D F P E E K O
 N U I O E N O T G N I L L E W
 E H A R E B U R U D R E S A O
 E E S M W I P G E O V T N J V
 U A O E R N O E L O P A N A R
 Q D B W Z N O P O T A H M Z E

There should be nine altogether - plus a wriggly customer!

ANSWERS NEXT MONTH

B'CASTLE

HELLO, I'M BO' CASTLE AND I'LL BE USING THIS SPACE IN COMING MONTHS TO LET YOU SHARE IN SOME OF THE HAPPENINGS AT 'HARDY COTTAGE' BOSCASTLE...

MUFFLE MUFFLE



COPYRIGHT - JMB.

ADVERTISE ADVERTISE

FROM LARGE ADS, TO SMALL ADS
 FROM B&B ACCOMMODATION, TO THAT OLD PRAM
 IN THE

BOSCASTLE CHRONICLE

LET US HAVE YOUR MARCH ADVERTS

NOW

TEL BOSCASTLE 559